



7<sup>TH</sup> PUBLIC HEALTH PALLIATIVE CARE  
INTERNATIONAL CONFERENCE

# DEMOCRATIZING CARING, DYING AND GRIEVING: PARTICIPATION, ACTION, UNDERSTANDING AND EVALUATION

**20-23 SEPTEMBER 2022**

**BRUGES, BELGIUM**

© Simon Verschelde



## PROGRAMME



# WELCOME

This congress brings together the state of the art in the science and practice of public health and palliative care. We welcome you also to the beautiful city of Bruges in Belgium and to Compassionate Bruges.

There is increasing recognition that the challenges around serious illness, caregiving, dying and bereavement go beyond the scope of professional health care services. Promoting health and wellbeing in these domains entails societal and civic responses complementary to health service responses. For instance, governments, health and wellbeing organizations, workplaces, schools, churches, neighbourhoods and health care services can collaborate to develop supportive social environments, policies, health services, skills and community action.

The worldwide COVID-19 pandemic reminds us all of the importance of public health. This common pandemic experience should boost palliative care communities, associations or societies to make public health palliative care one of their main policy priorities. Palliative care clinicians and health care providers cannot solve all the problems of death, dying and bereavement by themselves, so they should collaborate more with community workers, social change workers, health promoters, sociologists, city planners, adult educators, public health professionals, etc. in order to design and develop, in co-production with local communities, societal solutions to the major challenges around serious illness, caregiving, dying and bereavement.

Thanks are due to our Scientific Committee for putting together an excellent program with content for all. Our plenaries, themed sessions, oral presentation sessions and poster sessions include diverse speakers from a wide range of countries and continents, presenting important topics related to public health and palliative care.

And thanks are due to you all for coming to the PHPCI 2022 conference in Bruges and for your dedication to the field of public health and palliative care.

We look forward to interacting with all of you at the conference in Bruges! Please also share your thoughts and ideas online by using #PHPCI2022.



Luc Deliens



Joachim Cohen



John Rosenberg

Joint chairs of the Scientific Committee  
7th World Congress of PHPCI

President of Public Health Palliative Care International





## GESTURES OF ARTISTIC CARE

Throughout time and across different continents and cultures, art has always shown a deep, consistent engagement with the themes of serious illness, caregiving, dying and bereavement. Especially in the last decade, the international arts world has shown a striking upsurge of interest in the theme of 'care'. The organizers of the PHPCI conference have taken on the worthy ambition to explore connections between the worlds of art and science by inviting artists and creatives to be a part of this conference.

In a unique partnership with the Musea Brugge - as part of the Compassionate Bruges Nodes city festival - we proudly present the breathtaking installation *The Great Crossing* (@Reveil), during which thousands of lanterns will be launched on the canals of Bruges, as a moment of reflection and consolation. We also invite you to explore the exhibition *Underneath the Shade We Lay Grounded* of the internationally acclaimed visual and performance artist Otobong Nkanga in the unique setting of the St John's Hospital, one of the oldest preserved hospital buildings in Europe. In her work, Nkanga explores themes such as identity, grounding, care and healing - inviting visitors to rest and contemplate through connecting with her art.

Within the framework of the conference, Belgium's reputation as a magnet for experimental art is reflected in the interdisciplinary group of artists we bring together, within the framework of the conference, to form a 'temporary artistic community'. All artists involved have a sustained artistic practice that revolves around notions such as care, compassion, connection, community, loss, and grief. They will enter into a dialogue with each other, the conference and you through their practice, offering artistic gestures, interventions, presentations, performances and workshops. The participating artists are Rasa Alksnyte, Anaïs Chabeur, Florin Flueraș, Fiona Hallinan, oracle (Michel Yang, Caroline Daish & Justine Maxelon), Hoda Siahtiri, Luca Vanello and Ellen Lili Vanderstraeten.

Furthermore, we have invited a local, informal network of Bruges creatives and artists with a shared practice in developing multi-media interventions for important moments in life (such as farewells) to create interventions together for the ceremonial moments of the conference, such as the conference dinner and opening and closing ceremony. Last but not least, the many speakers who are included in the conference program and who hold an artistic focus must be mentioned. We wholeheartedly invite you to interact with this artistic program, and hope this might lead to mutual curiosity, interdisciplinary sparks, and a better understanding of how art could contribute to Compassionate Communities.

Julie Rodeyans, Else Gien Statema & Marijke Dheedene  
Curators and coordinators of the artistic track



Marijke Dheedene



Julie Rodeyans



Else Gien Statema

## KNOOPPUNTENFESTIVAL IN BRUGGE [NODES CITY FESTIVAL IN BRUGES]

During the conference week, from 17 until 25 September 2022, Compassionate Bruges is organizing the city festival Nodes. The festival embraces more than 40 local initiatives on the themes of serious illness and long-term informal care, mourning and loss. The festival is organized in tandem with the world congress Public Health Palliative Care International.

In 2020, Bruges was the first city in Belgium to become a 'Compassionate City'. Compassionate Bruges wants to give a place to loss, death, grief, mourning, situations of serious illness and long-term informal care in the city. It wants to connect people with each other and strengthen existing initiatives and organizations so that Bruges can be an even more caring city and show its solidarity.

A selection of initiatives from the Nodes city festival: ceramics workshops on loss, care and connection, a science café, various local organizations hold an open day to offer inspiration to the visitors, a dance performance, a compassionate cinema, connecting people by singing together, lectures by professionals and researchers etc.

All details and programme <https://www.brugge.be/knooppuntenfestival>  
(Dutch only)



**SCIENTIFIC COMMITTEE 2022**

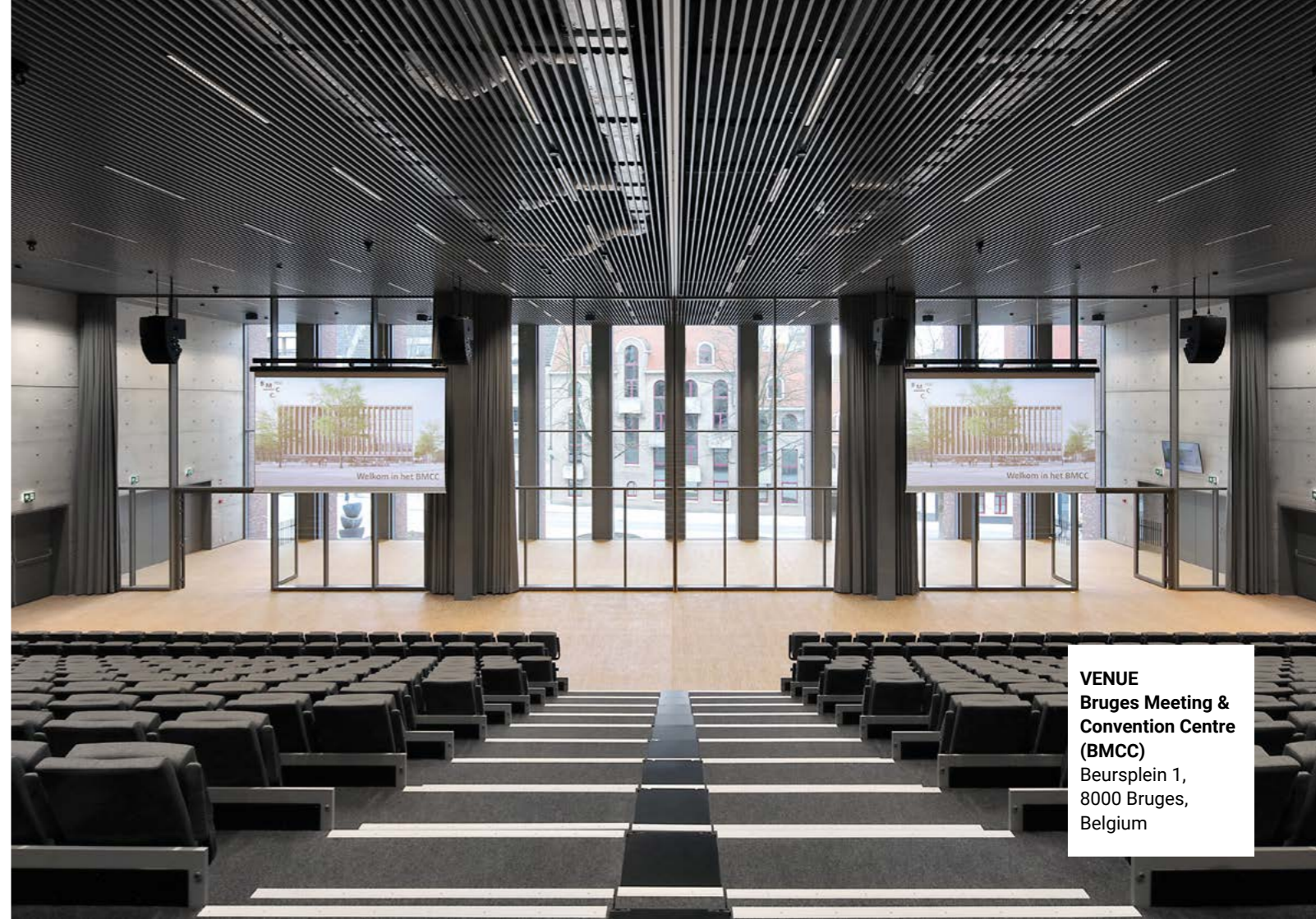
**Samar Aoun**, La Trobe University and Perron Institute, Australia  
**Joachim Cohen**, End-of-Life Care Research Group Vrije Universiteit Brussel & Ghent University, Co-Chair  
**Liesbeth De Donder**, Vrije Universiteit Brussel, Belgium  
**Luc Deliens**, End-of-Life Care Research Group Vrije Universiteit Brussel & Ghent University, Chair  
**Steffen Eychmüller**, Universitäres Zentrum für Palliative Care, Switzerland  
**Rebecca Hilton**, Stockholm University of the Arts, Sweden  
**Bregje Onwuteaka-Philipsen**, Amsterdam University Medical Center, The Netherlands  
**Denise Marshall**, McMaster University, Canada  
**John Rosenberg**, President of Public Health Palliative Care International  
**Libby Sallnow**, CNWL NHS Trust, United Kingdom  
**Carol Tishelman**, Karolinska Institutet, Sweden  
**Raymond Voltz**, Uniklinik Köln, Germany  
**Klaus Wegleitner**, University of Graz, Austria

**CULTURAL COMMITTEE 2022**

**Alana Boone**, Policy officer, Local social policy unit at city of Bruges, Belgium (& member of Compassionate Bruges team)  
**Louise D'Eer**, PhD researcher, End-of-Life Care Research Group VUB & UGent, Belgium  
**Marijke Dheedene**, Coordinator communication & valorisation, End-of-Life Care Research Group VUB & UGent, Belgium  
**Rebecca Hilton**, Stockholm University of the Arts, Sweden  
**Ruth Raes**, Project coach Compassionate Bruges, End-of-Life Care Research Group VUB & UGent, Belgium  
**Julie Rodeyans**, Vrije Universiteit Brussel, Belgium  
**Else Gien Statema**, End-of-Life Care Research Group VUB & UGent, Belgium, Chair

**ORGANIZING COMMITTEE 2022**

**Alana Boone**, Policy officer, Local social policy unit at city of Bruges, Belgium (& member of Compassionate Bruges team)  
**Joachim Cohen**, End-of-Life Care Research Group VUB & UGent, Belgium  
**Luc Deliens**, End-of-Life Care Research Group VUB & UGent, Belgium  
**Nadine De Mot**, Management assistant, End-of-Life Care Research Group VUB & UGent, Belgium  
**Marijke Dheedene**, Coordinator communication & valorisation, End-of-Life Care Research Group VUB & UGent, Belgium  
**Geertje van Duijnhoven**, Management assistant, End-of-Life Care Research Group VUB & UGent, Belgium, Chair



**VENUE**  
**Bruges Meeting & Convention Centre (BMCC)**  
 Beursplein 1,  
 8000 Bruges,  
 Belgium

**DAY 1**

**11:00 AM REGISTRATION OPENS**

**12:00 PM DOORS OPEN**

**1:00 - 2:30 PM WELCOMING CEREMONY**

- level 1, Plenary hall
- **Pablo Annys**, Alderman of the city of Bruges
- **Karin Vanderkerken**, Vice-Chancellor of the Vrije Universiteit Brussel
- **John Rosenberg**, President of PHPCI
- **Luc Deliens**, Chair of the Scientific Committee
- **Julie Rodeyans & Else Gien Statema**, Introducing the artistic and cultural track of the conference
- **Marijke Dheedene**, Host

Musical interlude by Florilegium

**2:30 - 3:30 PM PLENARY 1: DEVELOPING COMPASSIONATE CITIES**

- level 1, Plenary hall
- Chair: Joachim Cohen (Belgium)
- 2:30-2:50 PM: Invited Lecture *Developing Compassionate Bruges and Compassionate Herzele* by Ruth Raes, Belgium
- 2:50-3:30 PM: Panel with Ruth Raes (Belgium), Elizabeth Bayliss (United Kingdom), John Rosenberg (Australia), Pablo Annys (Belgium), Claudia Michel (Switzerland)

**3:30 - 4:00 PM COFFEE BREAK**

level 4, Catering hall

**4:00 - 5:30 PM CONCURRENT SESSIONS 1: LEVEL 3 – BREAK OUT ROOMS**

**4:00 - 5:30 PM SYMPOSIUM: CHALLENGES OF RESEARCH ABOUT PEER SUPPORT IN PALLIATIVE CARE**

Break out 1+2 (80 theatre capacity)  
Chairs: Erica Witkamp, Kate Lorig  
Speakers: Catherine Walshe, Nancy Luu, Judith Rietjens (257)

**4:00 - 5:30 PM WORKSHOP: LEADING CULTURAL CHANGE IN HEALTH CARE: PRACTICE-BASED EVIDENCE**

Break out 3 (20 workshop capacity)  
Ruth Raes (175)

**4:00 - 5:30 PM**

Break out 4+5 (80 theatre capacity)

**FREE COMMUNICATION: COMMUNITY ACP**

- Chairs: Aline De Vleminck and Raymond Voltz
- 1: *Dissemination, Use and Impact of a Community-based Advance Care Planning Intervention: Ripple Effects of the Swedish DöBra cards*  
Malin Eneslätt (223)
- 2: *Stakeholder Perspectives for Improving Palliative Care and Advance Care Planning in the Community*  
Konrad Fassbender (188)
- 3: *Development and evaluation of a public course in order to empower lay people in the process of advance care planning*  
Steffen Eychmüller & Claudia Michel (114)
- 4: *Utilizing a life journey and multi-sectoral approach to promote advance care planning*  
Konrad Fassbender (189)
- 5: *The cultural adaptation of the GoWish cards for use in Flanders, Belgium: a game to identify and discuss end-of-life preferences*  
Charlèss Dupont (92)

**4:00 - 5:30 PM**

Break out 6 (80 theatre capacity)

**FREE COMMUNICATION: VARIOUS TOPICS**

- Chairs: Bregje Onwuteaka-Philipsen and Nicholas Jennings
- 1: *Live well, die well (iLIVE): Cohort and interview study protocol of an international research programme*  
Melanie Joshi (153)
- 2: *"Humanae: human transformation towards caregiving". A project to promote compassionate care education in a school of health science*  
Claudia Villegas (281)
- 3: *The underused potential of social workers in palliative care in Flanders: A mixed-methods study*  
Brent Taels (134)
- 4: *From living well with dementia to dying well with dementia: Paradoxes and problems in current approaches to end-of-life care*  
Joseph Sawyer (141)
- 5: *Dying in the Margins: Creating Co-Produced Images with People Experiencing Financial Hardship at the End of Life*  
Sam Quinn (283)



**4:00 - 5:30 PM** **SYMPOSIUM: SOCIAL, POLITICAL, AND INTERPERSONAL POWER AND ACCESS TO HASTENED DEATH**  
Break out 7+8  
(50 theatre capacity)  
Speakers: Jane Lowers, Claudia Gamondi, Victoria Ali, Janette Fish (61)

**4:00 - 5:30 PM** **WORKSHOP: TAKE A CRASH COURSE IN USING THE DEATH LITERACY INDEX**  
Break out 9  
(15 workshop capacity)  
Kerrie Noonan (215)

**4:00 - 5:30 PM** **WORKSHOP: LOOKING FORWARD: A WORKSHOP EXPLORING THE PRIORITIES FOR PUBLIC HEALTH PALLIATIVE CARE RESEARCH IN THE COMING DECADE.**  
Break out 10+11  
(35 workshop capacity)  
Steven Vanderstichelen, Carol Tishelman, Luc Deliens, Joachim Cohen (265)

**4:00 - 5:30 PM** **GESTURES OF ARTISTIC CARE:**  
Break out 12  
(80 theatre capacity)  
Artistic gestures, interventions, presentations, performances and workshops by an interdisciplinary, temporary community of local artists.

Rasa Alksnyte, Anaïs Chabeur, Florin Flueraș, Fiona Hallinan, oracle (Michel Yang, Caroline Daish & Justine Maxelon), Hoda Siahtiri, Luca Vanello and Ellen Lili Vanderstraeten.

see p 42

## POSTER EXHIBITION ON 20-21 SEPTEMBER 2022

**Location:** Foyer, level 3

Themes:

- ACP & End of Life communication
- Community
- COVID-19
- Literacy & Education
- Various Topics

# NODES CITY FESTIVAL EVENT

## TUESDAY THE 20TH OF SEPTEMBER 2022

### 6:00 PM | COMPASSIONATE BRUGES WALK

**Start Location:** in front of the BMCC entrance: Beursplein 1, 8000 Bruges



This walk was created by the Bruges informal care network, a network of 10 local organizations supporting Bruges' citizens on informal care, in collaboration with the End-of-Life Care research group. A wide-spread call has motivated the people of Bruges to write a poem about their experiences with informal care. A selection of these poems are waiting to be discovered during the walk. Additionally, staff and students of the Municipal Academy of Bruges (Fine Arts & Audiovisual Arts) have made a contribution by sharing some of their best work on themes such as proximity and loss.

The result is a unique poetry and art walk that reveals many beautiful, historic locations in the centre of Bruges.

The walk starts at the conference venue and ends in the city centre of Bruges – the ideal setting for a nice dinner at one of the many restaurants.

*Throughout the conference week, you can undertake the Compassionate Bruges walk on your own initiative as well, at a time that suits you best.*



Louise D'Eer



Bert Quintiens

**DAY 2**

**8:00 - 9:00 AM REGISTRATION OPENS**

**8:30 - 9:00 AM WELCOME COFFEE**

level 4,  
Catering hall

**9:00 - 10:30 AM PLENARY 2: HOW TO MAKE PALLIATIVE CARE POLICIES MORE PUBLIC HEALTH MINDED**

level 1,  
Plenary hall

Chair: Luc Deliens (Belgium)

9:00-9:05 Video presentation: Hans Kluge (WHO Europe)

9:05-9:25 Invited lecture *Integrated Care* Viktoria Stein (The Netherlands)

9:30-10:30 Panel: Stephen Connor (WHPCA), Christoph Ostgathe (EAPC), John Rosenberg (PHPCI),  
Julie Ling (WHO Europe), Viktoria Stein (Leiden University Medical Centre)

**10:30 - 11:00 AM COFFEE BREAK**

level 4,  
Catering hall

**11:00 AM - 12:30 PM CONCURRENT SESSIONS 2: LEVEL 3 – BREAK OUT ROOMS**

**11:00 AM - 12:30 PM SYMPOSIUM: LESSONS LEARNED DURING THE COVID-19 AND BEYOND PANDEMIC FOR CHILDREN LIVING WITH RARE DISEASES, THEIR SIBLINGS, AND FAMILIES.**

Break out 1+2

(80 theatre capacity)

Chair: Ulrika Kreicbergs

Speakers: Charlotte Handberg, Camilla Udo, Ulrika Kreicbergs, Jessica Thompkins (54)

**11:00 AM - 12:30 PM WORKSHOP: END OF LIFE AID SKILLS FOR EVERYONE (EASE)**

Break out 3

(20 workshop  
capacity)

Rebecca Patterson, Caroline Gibb, Mark Hazelwood (32)

**11:00 AM - 12:30 PM FREE COMMUNICATION: COMPASSIONATE CITIES (PART A)**

Break out 4+5

(80 theatre capacity)

Chairs: Steffen Eychmüller and Tinne Smets

1: *A Compassionate City Charter in the USA embracing belonging, loss, and resiliency*  
Diane Witt (274)

2: *What constitutes a caring community? – A qualitative study*  
Raymond Voltz (62)

3: *Implementing Compassionate Communities Programs to all regions in Thailand: Experience and lessons learned*  
Ekkapop Sittiwantana (146)

4: *Living and Dying in the City of Bern – Development and Implementation of the Bernese Charta for a Commonly Supported End of Life*  
Felber Sibylle Jeanine (68)

5: *Development and Implementation of Compassionate Communities in Japan: approaches initiated by a home hospice clinic*  
So Nishimura (245)

**11:00 AM - 12:30 PM FREE COMMUNICATION: VARIOUS TOPICS**

Break out 6

(80 theatre capacity)

Chairs: Klaus Wegleitner and Koen Pardon

1: *Processes underpinning care homes' ability to provide palliative care during COVID-19, and policy recommendations (CovPall\_CH)*  
Katherine Sleeman (142)

2: *Strategies for implementation of a palliative approach: a scoping review*  
Susanna Böling (280)

3: *A Public Health hazard: if in jurisdictions permitting assisted dying (AD) palliative care (PC) rejects AD, all end of Life care may suffer.*  
Marie-José H.E. Gijsberts (217)

4: *Role of end-of-life care planning in knowledge of partner's preferences for end-of-life aspects*  
Sarah Vilpert (256)

5: *No Barriers Here – A Creative Approach to Advance Care Planning Conversations with Communities often underserved in Healthcare*  
Jed Jerwood and Gemma Allen (150)

**11:00 AM - 12:30 PM SYMPOSIUM: NAVIGATION INTERVENTIONS TO SUPPORT PATIENTS WITH SERIOUS OR ADVANCED ILLNESS AND THEIR FAMILY: OPPORTUNITIES AND CHALLENGES**

Break out 7+8

(50 theatre capacity)

Lieve Van den Block, Wendy Duggleby, Bregje Onwuteaka-Philipsen, Catherine Walshe,  
Rose Miranda (118)

**11:00 AM - 12:30 PM WORKSHOP: BUILDING DEMENTIA-INCLUSIVE COMMUNITIES THROUGH ARTS AND CULTURE: THE CASE OF THE ACADEMY OF BRUGES**  
*Break out 9*  
 (15 workshop capacity)  
 Annelore Boone, Els Robaey, Julie Rodeyns (262)

**11:00 AM - 12:30 PM WORKSHOP: PARTICIPATORY WORKSHOP ON THE DEATH LITERACY INDEX: EXAMINATION AND REFLECTION ABOUT ITS CROSS-CULTURAL RELEVANCE AND VIABILITY.**  
*Break out 10+11*  
 (35 workshop capacity)  
 Chair: Carol Tishelman  
 Speakers: Therese Johansson, Steven Vanderstichelen, Kerrie Noonan, Rosemary Leonard, Joachim Cohen (222)

**11:00 AM - 12:30 PM GESTURES OF ARTISTIC CARE:**  
*Break out 12*  
 (80 theatre capacity)  
 Artistic gestures, interventions, presentations, performances and workshops by an interdisciplinary, temporary community of local artists.  
 Rasa Alksnyte, Anaïs Chabeur, Florin Flueraș, Fiona Hallinan, oracle (Michel Yang, Caroline Daish & Justine Maxelon), Hoda Siahtiri, Luca Vanello and Ellen Lili Vanderstraeten.

**12:30 - 1:30 PM LUNCH**  
*level 4,*  
*Catering hall*  
 Poster lightning session

Additional event:  
**SYMPOSIUM EAPC REFERENCE GROUP SPIRITUAL CARE: BRIDGING PUBLIC HEALTH AND HOSPICE CARE, THE POSSIBLE ROLE OF SPIRITUALITY AND COMPASSIONATE COMMUNITIES**  
 Timeslot: 12:40-1:10 PM  
 Location: Break out 7+8 (50 theatre capacity)

**1:30 - 3:00 PM**

**CONCURRENT SESSIONS 3: LEVEL 3 – BREAK OUT ROOMS**

**1:30 – 3:00 PM**  
*Break out 1+2*  
 (80 theatre capacity)

**SYMPOSIUM: COMMUNITY DEVELOPMENT AROUND SERIOUS ILLNESS, DYING AND LOSS: STORIES AND PERSPECTIVES FROM THREE COUNTRIES.**  
 Louise D'Eer, Libby Sallnow, Mary Lou Kelley (186)

**1:30 – 3:00 PM**  
*Break out 3*  
 (20 workshop capacity)

**WORKSHOP: 'IT TAKES A VILLAGE': EXPLORING POTENTIALS AND LIMITATIONS IN APPLYING THE DEATH SYSTEM CONCEPT IN PUBLIC HEALTH PALLIATIVE CARE.**  
 Carol Tishelman, Kerrie Noonan, Malin Eneslätt, Max Kleijberg (115)

**1:30 – 3:00 PM**  
*Break out 4+5*  
 (80 theatre capacity)

**FREE COMMUNICATION: VOLUNTEERS AND COMPASSIONATE NEIGHBOURS**

- Chairs: Sarah Dury and Steven Vanderstichelen
- 1: *Volunteer befrienders supporting people at end of life and their carers at home within a compassionate communities approach*  
 Manjula Patel (112)
  - 2: *Service evaluation of compassionate neighbours programme at St Clare Hospice*  
 Qamar Abbas (69)
  - 3: *The Compassionate Communities Connectors model for end-of-life care - Implementation and evaluation*  
 Samar Aoun (106)
  - 4: *Hospice Volunteers in Europe and North America: Who Are They and What Do They Experience?*  
 Caroline Varay (28)
  - 5: *Compassionate neighbours at hospices: where are we? A survey of selected service managers*  
 Qamar Abbas (81)



- 1:30 – 3:00 PM**  
Break out 6  
(80 theatre capacity)
- FREE COMMUNICATION: COMMUNITY ENGAGEMENT AND DEVELOPMENT (PART A)**  
Chairs: Liesbeth De Donder and Nicholas Jennings
- 1: *Maison Mourance: qualitative study of the vision, organisation and challenges of a community-led end-of-life facility in Brussel*  
Sabet Van Steenberghe (139)
- 2: *Putting your house in order: Finding the carrot for community engagement on dying, death & bereavement*  
Valerie Smith (31)
- 3: *Allies or Interlopers? End of Life Doulas and Palliative Care*  
Marian Krawczyk (302)
- 4: *Designing human-centred palliative environments*  
Iris Beuls (230)
- 5: *Democratizing palliative care using a community-based compassionate palliative care model, COMPASS Ghana.*  
Yakubu Salifu (107)
- 1:30 – 3:00 PM**  
Break out 7+8  
(50 theatre capacity)
- FREE COMMUNICATION: HEALTH PROMOTING PALLIATIVE CARE**  
Chairs: Luc Deliens and Raymond Voltz
- 1: *The First Oxford Textbook of Public Health Palliative Care*  
Julian Abel (20)
- 2: *Palliative Rehabilitation, an urgent need in the field of Public Health.*  
Gabriela Rezende (296)
- 3: *How can a behavioral theory be used to gain insight into factors of health-promoting behavior during serious illness?*  
Anne-Lore Scherrens (58)
- 4: *Understanding early intervention strategies using the 'New Essentials' framework: turning theory into practice.*  
John Rosenberg (100)
- 5: *Palliative Care Awareness Week 2021- A Collaborative Approach to a public information campaign*  
Yvonne McCahill (253)

**1:30 – 3:00 PM**  
Break out 9  
(15 workshop capacity)

**WORKSHOP: THE MALLON MICRO-MODEL: CREATING AND MAINTAINING COMPASSIONATE COMMUNITIES WHEN SOMEONE IS DYING AT HOME.**  
Annetta Mallon (23)

**1:30 – 3:00 PM**  
Break out 10+11  
(35 workshop capacity)

**WORKSHOP: GRIEF LITERACY: HOW TO TAKE IT INTO PRACTICE AND EDUCATION.**  
Susan Cadell (55)

**1:30 – 3:00 PM**  
Break out 12  
(80 theatre capacity)

**GESTURES OF ARTISTIC CARE:**  
Artistic gestures, interventions, presentations, performances and workshops by an interdisciplinary, temporary community of local artists.

Rasa Alksnyte, Anaïs Chabeur, Florin Flueraș, Fiona Hallinan, oracle (Michel Yang, Caroline Daish & Justine Maxelon), Hoda Siahtiri, Luca Vanello and Ellen Lili Vanderstraeten.

**3:00 - 3:30 PM**  
level 4,  
Catering hall

**COFFEE BREAK**

**3:30 - 5:00 PM**  
level 1,  
Plenary hall

**PLENARY 3: LEARNING FROM NEIGHBORS: LEARNING FROM RELATED MOVEMENTS**  
Chairs: Klaus Wegleitner (Austria)

3:30-4:00 PM Invited Lecture *Caring communities* by Liesbeth De Donder (Belgium)  
4:00-4:30 PM Invited Lecture: *Social justice and participation* by Sarah Banks (UK)  
4:30-5:00 PM Invited Lecture: *Peer support* by Kate Lorig (USA)



## POSTER EXHIBITION ON 20-21 SEPTEMBER 2022

**Location:** Foyer, level 3

**Themes:**

- ACP & End of Life communication
- Community
- COVID-19
- Literacy & Education
- Various Topics





**DAY 3****8:00 - 9:00 AM REGISTRATION OPENS****8:30 - 9:00 AM WELCOME COFFEE**level 4,  
Catering hall**9:00 - 10:30 AM PLENARY 4: RESEARCH AND EVALUATION OF COMPASSIONATE COMMUNITIES**level 1,  
Plenary hall

Chairs: Bregje Onwuteaka-Philipsen (The Netherlands)

9:00-9:25 AM: Invited Lecture *Evaluating comcoms* by Joachim Cohen (Belgium)9:25-9:50 AM: Invited Lecture *Evaluation of caring communities* by Merel Visse (The Netherlands/USA)

9:50-10:30 AM: Panel with Joachim Cohen (Belgium), Carol Tishelman (Sweden), Merel Visse (The Netherlands/SA), Libby Sallnow (UK)

**10:30 - 11:00 AM COFFEE BREAK**level 4,  
Catering hall**11:00 AM - 12:30 PM CONCURRENT SESSIONS 4: LEVEL 3 – BREAK OUT ROOMS****11:00 AM - 12:30 PM SYMPOSIUM: EMPOWERING FAMILY CARERS TO SUPPORT PEOPLE REQUIRING PALLIATIVE CARE.**Break out 1+2  
(80 theatre capacity)

Peter Hudson, Clare Gardiner, Aline De Vleminck, Sigrid Dierickx (91)

**11:00 AM - 12:30 PM WORKSHOP: WHY IS IT SO HARD TO BECOME EQUAL PARTNERS?**Break out 3  
(20 workshop  
capacity)**UNDERSTANDING HOW A PARTNERSHIP DEVELOPMENT FRAMEWORK CAN SHAPE PARTNERSHIP SUCCESS**

Chairs: John Rosenberg, Wendy Gain (121)

**11:00 AM - 12:30 PM FREE COMMUNICATION: DEATH LITERACY AND KNOWLEDGE OF DEATH SYSTEMS**Break out 4+5  
(80 theatre capacity)

Chairs: Carol Tishelman and Steven Vanderstichelen

1: *End-of-life health literacy: a validation study of a new instrument, the End-of-life Health Literacy Scale (EOL-HLS)*  
Clément Meier (263)2: *Factors influencing death literacy in a Swedish sample*  
Therese Johansson (221)3: *The Lancet Commission on the Value of Death: Bringing death back into life*  
Libby Sallnow (209)4: *"What does the public know about palliative care?": a population-based survey in two urban and two semi-urban cities.*  
Marjolein Matthys (278)5: *Public Attitudes and Preparedness Toward Death: A Thematic Analysis*  
Jacquelyn Tan (219)**11:00 AM - 12:30 PM FREE COMMUNICATION: COVID-19**Break out 6  
(80 theatre capacity)

Chairs: Bregje Onwuteaka-Philipsen and Lieve Van den Block

1: *Fear of death and coping strategies of healthcare professionals during the COVID-19 pandemic*  
Luis Felipe Calle-Cruz (85)2: *Saying goodbye in the age of physical distancing*  
Kathy Kortes-Miller (133)3: *Palliative care should be part of a public health pandemic response – insights from transferring the National End of Life Care I*  
Julia Verne (161)4: *Massive shift in proportion of cancer patients dying at home instead of hospital in England during COVID-19 Pandemic*  
Julia Verne (158)5: *The importance of emotional support for relatives before and during the COVID-19 pandemic: a quantitative study among relatives*  
Sophie Renckens (130)**11:00 AM - 12:30 PM FREE COMMUNICATION CULTURE, PHILOSOPHY AND SPIRITUALITY**Break out 7+8  
(50 theatre capacity)

Chair: Rebecca Hilton and Marie-Jose Gijsberts

1: *Bridging Public Health and Hospice Care, the possible role of spirituality and compassionate communities*  
Erik Olsman (220)2: *What does it mean to be 'compassionate'? From the perspectives of a Japanese philosopher*  
Hirobumi Takenouchi (135)

3: "Bayanihan." The cultural practice that turns health care workers & ordinary Filipinos into heroes during the pandemic

Maria Fidelis Manalo (148)

4: Supporting the dying process through volunteer biography services

Megan Best (307)

5: What do research studies identify as spiritual and religious interventions at the end-of-life? Findings from a Cochrane review

Bella Vivat (182)

**11:00 AM - 12:30 PM WORKSHOP: A DESIGN APPROACH TO TRANSDISCIPLINARY END-OF-LIFE CARE CHALLENGES.**

Break out 9  
(15 workshop capacity)

Max Kleijberg, Marieke Sonneveld (154)

**11:00 AM - 12:30 PM WORKSHOP: COMPASSIONATE COMMUNITIES IN COLOMBIA, ARGENTINA, AND SWITZERLAND HOW TO ASSESS THEIR EFFECTIVENESS? AN INTERACTIVE WORKSHOP.**

Break out 10+11  
(35 workshop capacity)

Valentina González-Jaramillo, Alicia Krikorian, Vilma Tripodoro, Steffen Eychmüller (271)

**11:00 AM - 12:30 PM WORKSHOP: (RE-)TURNING THE MEDIEVAL ST JOHN'S HOSPITAL IN BRUGES INTO A HEALING PLACE**

Break out 12  
(80 theatre capacity)

Geert Souvereyns, Lieven Devisch, Michel Dewilde (Musea Brugge)

The Sint-Janshospitaal (St John's Hospital) in Bruges is one of the oldest preserved hospital buildings in Europe. The old hospital rooms, the chapel, the nunnery and brotherhood, the historic pharmacy breathe history, and the (art) objects that are kept and displayed there are specifically made for this context. They bear witness to eight centuries of care for body and soul in this location.

Musea Brugge is currently preparing a new museum concept that aims to offer much more than a historical story. The history of the hospital and the collection will be linked to universal themes such as hospitality, compassion, life and death, body and soul, suffering and meaning. Contemporary works of art will be integrated to enhance this story. With the new layout and operation of St John's Hospital, Musea Brugge aims not only to speak to the minds of visitors, but also to their hearts, thus transforming the historic building into a contemporary, healing place.

In this workshop, staff members of Musea Brugge, who are currently preparing the new concept of the St John's Hospital, will enter into a dialogue with you about the overall concept, the selection of themes and artworks and the possibilities of connecting art and care.

**12:30 - 1:30 PM**

level 4,  
Catering hall

**LUNCH**

Poster lightning session

**1:30 - 3:00 PM**

**CONCURRENT SESSIONS 5: LEVEL 3 – BREAK OUT ROOMS**

**1:30 – 3:00 PM**

Break out 1+2  
(80 theatre capacity)

**SYMPOSIUM: STRATEGIES TO CREATE AWARENESS AND ENGAGE THE PUBLIC IN PREPARING FOR THE END OF LIFE. EXAMPLES FROM THE NETHERLANDS.**

Chairs: H. Roeline Pasma, Natasja J.H. Raijmakers.

Speakers: Larissa Exalto, Gudule Boland, Rob Bruntink, Annicka van der Plas (226)

**1:30 – 3:00 PM**

Break out 3  
(20 workshop capacity)

**WORKSHOP: USING VISUAL METHODS IN END OF LIFE RESEARCH**

Naomi Richards, Sam Quinn, Margaret Mitchell (video presentation) (124)

**1:30 – 3:00 PM**

Break out 4+5  
(80 theatre capacity)

**FREE COMMUNICATION: COMMUNITY ENGAGEMENT AND DEVELOPMENT (PART B)**

Chairs: Libby Sallnow and Kenneth Chambaere

1: Investigating impact development in Studio DōBra, a community-based participatory action research project to strengthen community engagement with end-of-life issues  
Max Kleijberg (65)

2: An evaluation of asset-based community development (ABCD) in a Scottish Hospice  
Susan High (98)

3: Dying at home - a functional micro compassionate community model to avoid burnout and build networks  
Annetta Mallon (24)



4: *Using a participatory community development approach within a paediatric children's hospice in Queensland, Australia*  
Leigh Donovan (29)

5: *Forming a Citizen-led Community of Practice to Implement the Compassionate City Charter*  
Guy Peryer (47)

**1:30 – 3:00 PM**

Break out 6

(80 theatre capacity)

**FREE COMMUNICATION: LOSS AND GRIEF (PART A)**

Chairs: Samar Aoun and Naomi Dhollander

1: *When death is all around: A rapid review of grief and bereavement experiences of social and community service workers*

Kara Whitlock (275)

2: *Quality Palliative Care: Interventions for Grieving and Bereaved Informal Caregivers in Canada*

Christopher Klinger (289)

3: *Therapeutic outcome measure use in an online bereavement counselling service (OBSC)*

Bianca Neumann (70)

4: *Bereaved relatives' experiences with and expectations of hospital based bereavement care: a qualitative study*

Charlotte Boven (75)

**1:30 – 3:00 PM**

Break out 7+8

(50 theatre capacity)

**FREE COMMUNICATION: FAMILY CAREGIVING**

Chairs: Peter Hudson and Steffen Eychmüller

1: *A systematic review of concordance and discordance between people with advanced illness and their caregivers in palliative care*

Geraldine Foley (33)

2: *Easy Language Empowers all Carers to Engage in Decision-Making*

Frank Spichiger (204)

3: *Expanding the circle for who can care: Challenging nuclear family dominance in care, dying, and bereavement*

Ashley Mollison (252)

4: *Being a child of a parent diagnosed with ALS - from the child's perspective*

Nina Malmström (233)

**1:30 – 3:00 PM**

Break out 9

(15 workshop capacity)

**WORKSHOP: COMPASSIONATE COMMUNITIES SUSTAINABILITY GUIDE – STRENGTHENING THE INITIATIVE'S PLANNING PHASES TO ACHIEVE SUSTAINABLE COMMUNITY-LED IMPACT.**

Bonnie Tompkins (286)

**1:30 – 3:00 PM**

Break out 10+11

(35 workshop capacity)

**WORKSHOP "LET'S TALK ABOUT IT" COMPASSIONATE OTTAWA (CO) PRESENTS THREE RESOURCES FOR COMMUNITY ENGAGEMENT AND EMPOWERMENT IN COMPASSIONATE COMMUNITY WORK.**

Kathy Kortés Miller, Mary Lou Kelley (176)

**1:30 – 3:00 PM**

Break out 12

(80 theatre capacity)

**GESTURES OF ARTISTIC CARE:**

Artistic gestures, interventions, presentations, performances and workshops by an interdisciplinary, temporary community of local artists.

Rasa Alksnyte, Anaïs Chabeur, Florin Flueraș, Fiona Hallinan, oracle (Michel Yang, Caroline Daish & Justine Maxelon), Hoda Siahtiri, Luca Vanello and Ellen Lili Vanderstraeten.

**3:00 - 3:30 PM**

level 4,

Catering hall

**COFFEE BREAK**

**3:30 - 5:00 PM**

level 1,

Plenary hall

**PLENARY 5: DIVERSITY, INCLUSION AND EQUITY IN COMPASSIONATE COMMUNITIES**

Chair: Steffen Eychmüller (Switzerland)

3.30-3.50 PM: Invited Lecture *Peer-to-peer learning for equity in cancer prevention; lessons learned for compassionate*

*communities* by Lena Sharp (Sweden)

3.50-4.10 PM: Invited Lecture *Where are the forgotten people in palliative care* by Philip Larkin (Switzerland)

4.10-4.30 PM: Invited Lecture *Homelessness and poverty* by Naheed Dosani (Canada)

4:30-4:50 PM: Invited Lecture *Towards a compassionate museum* by Isabel Vermote (Belgium)

## POSTER EXHIBITION ON 22-23 SEPTEMBER 2022

**Location:** Foyer, level 3

- Themes:**
- Cancer
  - Equity and Access
  - Euthanasia & MAID
  - Family caregiving
  - Health Promotion
  - Literacy & Education
  - Loss & grief
  - Paediatric Palliative Care

## CONFERENCE DINNER

**Date:** Thursday the 22th of September 2022

**Entrance 6:00 PM:** pre-registration required

- 6:00 PM reception

- 7:00 PM seating and dinner

**Speakers:** Mieke Hoste (Belgium), Luc Deliens (Belgium)

**Creative intervention:** Florilegium

**Location:** Site Oud Sint-Jan, Mariastraat 38, 8000 Bruges

The venue is located next to 'The Great Crossing' viewing point. Participants of the dinner can join both the conference dinner and the events of the Nodes City Festival.





# NODES CITY FESTIVAL EVENTS

## THURSDAY THE 22<sup>ND</sup> OF SEPTEMBER 2022

Conference participants are kindly invited to participate in the following of the many events of the Nodes city festival

**2.00 – 7.30 PM | NODES MARKET (KNOOPPUNTENBEURS)**

**Location: Huis van de Mens Brugge, Hauwerstraat 3C, 8000 Brugge**

A fair about care, loss and the end of life

This fair aims to inform, inspire and connect people from Bruges with numerous associations, institutions and initiatives working in the domain of care, loss and end of life, from researchers to care institutions, from art to peer groups. People struggling with an experience of loss, informal caregivers, people wanting to make decisions on care or engage in advance care planning and basically anyone looking for connection or inspiration concerning care, loss and end of life are most welcome to walk in on Thursday from 2.00 -7:30pm and on Friday from 2.00 to 5.00pm.

The information distributed at this fair is partly in Dutch, partly in English.  
Programme: <https://www.brugge.be/knooppuntenebeurs> (Dutch only)

**7.00 – 10.00 PM | THE GREAT CROSSING (DE GROTE OVERSTEEK)**

**Location: viewing point at Site Oud Sint-Jan, Mariastraat 38, 8000 Bruges**

In this mourning event, we honor and remember our deceased loved ones in the form of thousands of floating lanterns that follow a route along the Bruges canals. Everyone can leave a personal message on the lanterns, and there is a viewing point along the route, with room for reflection, comfort and consolation, supported by a cup of coffee and live piano music.

Organized by Musea Brugge, End-of-Life Care research group (VUB/UGent) and Reveil, as part of the Nodes city festival



About Reveil:

One of the driving forces behind the Flemish Mourning Revolution is the non-profit organization Reveil. Reveil organizes consoling concerts around sunset at cemeteries on November 1st, creates expositions, conferences, a magazine, theatre shows and other consoling productions, which enables cities to send a signal to their inhabitants. Reveil founder Pieter Deknudt is a singer songwriter who channeled the loss of a friend into a search for a warmer, more collective approach to death and bereavement.

<https://www.reveil.org/> (Dutch only)

**UNTIL 10:00 PM | NOCTURNE ST JOHN'S HOSPITAL:  
UNDERNEATH THE SHADE WE LAY GROUNDED. OTOBONG NKANGA**

**Location: St John's Hospital, Mariastraat 38, 8000 Brugge**

In this ground-breaking exhibition, Otobong Nkanga interweaves a variety of different artistic forms, such as installations, sculptures, drawings, tapestries and poetry. On the ground floor and in the imposing wooden attic of the St John's Hospital, she creates a dialogue between her own works of art (some new and some pre-existing) and works of art she has selected from the collection of Musea Brugge. At the same time, she also wishes to create a parallel dialogue with visitors, with the historic St John's Hospital, and with the city of Bruges.

Otobong Nkanga creates an environment where visitors can come to rest, a place for contemplation and relaxation, through connection with her art. St. John's Hospital is one of the oldest preserved hospital buildings in Europe with world class works by the Flemish primitive Hans Memling. Reduced entrance fee (€10) available for all PHPCI participants.

**DAY 4**

**8:00 - 9:00 AM REGISTRATION OPENS**

**8:30 - 9:00 AM WELCOME COFFEE**

level 4,  
Catering hall

**9:00 - 10:30 AM PLENARY 6: DEMOCRATIZING GRIEF AND BEREAVEMENT**

level 1,  
Plenary hall

Chair: Rebecca Hilton (Australia/ Sweden)

9:00-9:30 AM: Invited Lecture: *Grief and bereavement in compassionate communities: who can play a role and how?*

by Samar Aoun (Australia)

9:30-10:00 AM: Invited Lecture: *Towards a warmer mourning culture* by Pieter Deknudt (Belgium)

10:00-10:30 AM: *Gestures of artistic care*: collective presentation.

Rasa Alksnyte, Anaïs Chabeur, Florin Flueraș, Fiona Hallinan, oracle (Michel Yang, Caroline Daish & Justine Maxelon), Hoda Siahtiri, Luca Vanello and Ellen Lili Vanderstraeten.

**10:30 - 11:00 AM COFFEE BREAK**

level 4,  
Catering hall

**11:00 AM - 12:30 PM CONCURRENT SESSIONS 6: LEVEL 3 – BREAK OUT ROOMS**

**11:00 AM - 12:30 PM SYMPOSIUM: MAKING SERIOUS ILLNESS, DEATH, DYING AND LOSS 'PART OF LIFE' IN EDUCATIONAL INSTITUTIONS.**

Break out 1+2

(80 theatre capacity) Sally Paul, Marieke Groot, Veerle Coupez, Hanne Bakelants (228)

**11:00 AM - 12:30 PM WORKSHOP: USING A HEALTH PROMOTION APPROACH IN PALLIATIVE CARE RESEARCH.**

Break out 3

(20 workshop capacity)

Luc Deliens, Anne-Lore Scherrens, Marjolein Matthys, Malin Eneslätt (206)

**11:00 AM - 12:30 PM FREE COMMUNICATION: EQUITY AND ACCESS (PART A)**

Break out 4+5

(80 theatre capacity)

Chairs: Heather Richardson and Rose Miranda

1: *Research and action to support care for serious illness in inner city settings*

Kelli Stajduhar (250)

2: *Equity-oriented care and Structural Vulnerability- the ABCs of its application to our work in Public Health Palliative Care*

Holly Prince (201)

3: *Access to palliative care in the UK for people experiencing homelessness due to immigration issues*

Briony Hudson (177)

4: *How does poverty affect attitudes towards dying? Experiences of individuals and professionals in UK low-income communities*

Lorraine Hansford (63)

5: *Reflecting on roles, responsibilities, and choices when providing palliative care in socially disadvantaged areas*

Maddy French (270)

**11:00 AM - 12:30 PM FREE COMMUNICATION: COMPASSIONATE COMMUNITIES RESEARCH**

Break out 6

(80 theatre capacity)

Chairs: Denise Marshall and Joachim Cohen

1: *Researching Compassionate Communities from an interdisciplinary perspective: Development of a research framework*

Steven Vanderstichelen (53)

2: *Canadian Evaluation Toolkit – Supporting those leading Compassionate Communities Initiatives with their evaluation*

Bonnie Tompkins (294)

3: *Patient and Public Involvement (PPI) in palliative care research: experiences of the Mesothelioma UK Research Centre*

Clare Gardiner (127)

4: *Compassionate communities approaches to end of life care as a Therapeutic Landscape*

Manjula Patel (45)

5: *A compassionate community is a dementia-inclusive community: creating connections using Appreciative Inquiry methods*

Wendy Gain (113)



**11:00 AM - 12:30 PM ARTS AND END OF LIFE**

Break out 7+8

Chairs: Rebecca Hilton and Julie Rodeyans

(50 theatre capacity) 1: *Play elements in intergenerational arts activities* to support engagement with end-of-life issues – Studio DöBra Max Kleijberg (64)

2: *The Amfora conversation: providing language near the end of life*  
Michèle Morel (191)

3: *Illuminating artists' engagement with individuals with palliative care needs: a convergent mixed methods study*  
Jenny Baxley Lee (290)

4: *Imaginative Communication Across the Borders of Death. End-of-Life Narratives in Palliative and Bereavement Care.*  
Zoë Ghyselincx (231)

**11:00 AM - 12:30 PM WORKSHOP: LET'S FIND A WARMER LEXICON FOR LOSS.**

Break out 9

Peter Deknudt (295)

(15 workshop capacity)

**11:00 AM - 12:30 PM WORKSHOP: THE TRUACANTA PROJECT: SUPPORTING COMPASSIONATE COMMUNITIES.**

Break out 10+11

Caroline Gibb, Rebecca Patterson, Mark Hazelwood (35)

(35 workshop capacity)

**11:00 AM - 12:30 PM GESTURES OF ARTISTIC CARE:**

Break out 12

Artistic gestures, interventions, presentations, performances and workshops by an interdisciplinary, temporary community of local artists.

Rasa Alksnyte, Anais Chabeur, Florin Flueraș, Fiona Hallinan, oracle (Michel Yang, Caroline Daish & Justine Maxelon), Hoda Siahtiri, Luca Vanello and Ellen Lili Vanderstraeten.

**12:30 - 1:30 PM**

level 4,

Catering hall

**LUNCH**

Poster lightning session

**1:30 - 3:00 PM****1:30 – 3:00 PM**

Break out 1+2

(80 theatre capacity)

**1:30 – 3:00 PM**

Break out 3

(20 workshop capacity)

**1:30 – 3:00 PM**

Break out 4+5

(80 theatre capacity)

**CONCURRENT SESSIONS 7: LEVEL 3 – BREAK OUT ROOMS****SYMPOSIUM: LEAVING NO ONE BEHIND: PROVIDING PALLIATIVE CARE IN HUMANITARIAN SETTINGS.**

Joan Marston (video presentation), Kathryn Richardson, Megan Doherty, Mhoira Leng (50)

**WORKSHOP: DEVELOPING COMPASSIONATE CITIES AND COMMUNITIES: IMPACTS OF A TOP-DOWN INITIATION.**

Bert Quintiens, Emilie Lessard, Caroline Gibb (99)

**FREE COMMUNICATION: LOSS AND GRIEF (PART B)**

Chairs: Klaus Wegleitner and Sigrid Dierickx

1: *Equipping people to be Grief Kind*  
Bianca Neumann (254)

2: *Formalising peer mentoring relationships between bereaved parents in the hospital and hospice sector*  
Leigh Donovan (180)

3: *In-hospital bereavement services as an act of care and a challenge: An integrative review*  
Charlotte Boven (73)

4: *Guideline-based end-of life and Bereavement Support for families in cancer CARE (BEST CARE): An implementation research study*  
Thaqi Qendresa (224)

**1:30 – 3:00 PM**  
Break out 6  
(80 theatre capacity)

**FREE COMMUNICATION: EQUITY AND ACCESS (PART B)**

Chairs: Heather Richardson and Kim Beernaert

1: *Housing as a determinant of dying well: Insights from bereaved individuals and professionals in UK low-income communities*  
Lorraine Hansford (102)

2: *Winners and losers in palliative care service delivery: Time for a public health approach to palliative and end of life care*  
Samar Aoun (105)

3: *Cross Country Comparison of Expert Assessments of the Quality of Death and Dying 2021*  
Stephen Connor (103)

4: *Homeless Outreach and Palliative Care Education (HOPE) Pilot Service*  
Claire Towns (242)

5: *Improving Equity of Access to End of Life Care - An Appreciative Enquiry Study*  
Caitriona Callan (203)

**1:30 – 3:00 PM**  
Break out 7+8  
(50 theatre capacity)

**FREE COMMUNICATION: COMPASSIONATE CITIES (PART B)**

Chairs: Liesbeth De Donder and Joni Gilissen

1: *Healthy End of Life Project (HELP) Ottawa: From Engaging, Gathering and Mapping to Collectively Evaluating, Learning and Translating*  
Pamela Grassau (299)

2: *"Compassionate network: social transformation towards caregiving". Report of a compassionate community in Medellín, Colombia*  
Alicia Krikorian (284)

3: *Differences in urban and rural approach to build Compassionate Cities: Swiss examples*  
Claudia Michel (151)

4: *Building Compassionate Communities: An Integrated Approach to Raising Awareness of Palliative Care and Advance Care Planning*  
Konrad Fassbender (181)

**1:30 – 3:00 PM**  
Break out 9  
(15 workshop capacity)

**WORKSHOP: COMPASSIONATE WORKPLACES: A WORKSHOP EXPLORING HOW WORKPLACES CAN BECOME COMPASSIONATE COMMUNITIES.**

Deborah De Moortel, Steven Vanderstichelen (251)

**1:30 – 3:00 PM**  
Break out 10+11  
(35 workshop capacity)

**WORKSHOP: SETTINGS OF DYING – THE POSSIBILITIES AND LIMITS OF ‘DESIGNING’ AT THE END OF LIFE.**

Julia Rehsmann, Eva Soom Ammann, Corina Caduff, Tina Braun, Noëmi Lehmann

Gaudenz Metzger, Francis Müller, Bitten Stetter, Iris Beuls, Sabet Van Steenbergen (76)

**1:30 – 3:00 PM**  
Break out 12  
(80 theatre capacity)

**GESTURES OF ARTISTIC CARE:**

Artistic gestures, interventions, presentations, performances and workshops by an interdisciplinary, temporary community of local artists.

Rasa Alksnyte, Anaïs Chabeur, Florin Flueraș, Fiona Hallinan, oracle (Michel Yang, Caroline Daish & Justine Maxelon), Hoda Siahtiri, Luca Vanello and Ellen Lili Vanderstraeten.

**3:00 – 4:00 PM**  
level 1,  
Plenary hall

**CONFERENCE WRAP UP**

- **Carol Tishelman**, Scientific Committee

- **Pieter Marechal**, Alderman of the city of Bruges

- **Marijke Dheedene**, Host

- **Libby Sallnow**, Vice-President PHPCI

- **Joachim Cohen**, Chair of the Scientific Committee

Musical interlude by Florilegium

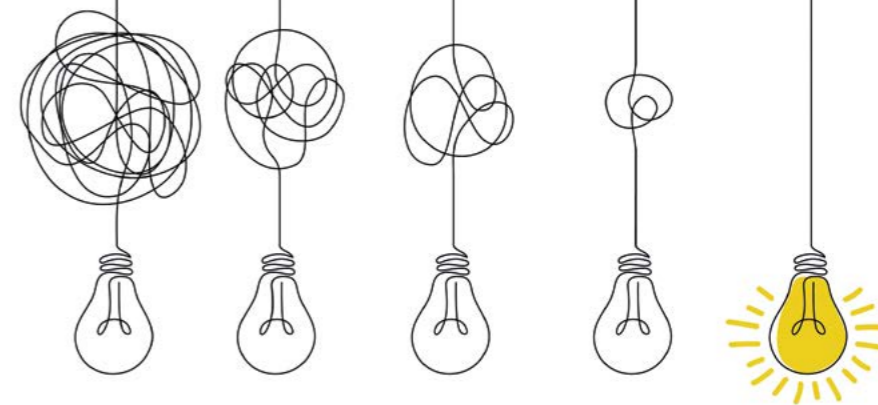


## POSTER EXHIBITION ON 22-23 SEPTEMBER 2022

Location: Foyer, level 3

Themes:

- Cancer
- Equity and Access
- Euthanasia & MAID
- Family caregiving
- Health Promotion
- Literacy & Education
- Loss & grief
- Paediatric Palliative Care



# NODES MARKET

## FRIDAY THE 23<sup>RD</sup> OF SEPTEMBER 2022

**2.00 – 5.00 PM | NODES MARKET (KNOOPPUNTENBEURS)**  
Location: Huis van de Mens Brugge, Hauwerstraat 3C, 8000 Brugge

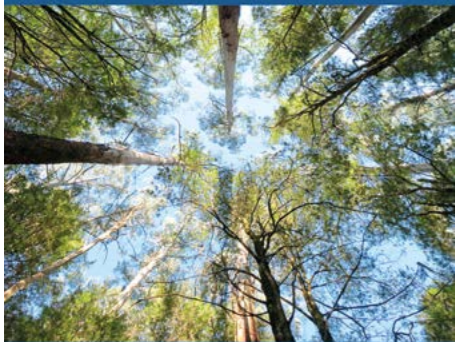
A fair about care, loss and the end of life

This fair aims to inform, inspire and connect people from Bruges with numerous associations, institutions and initiatives working in the domain of care, loss and end of life, from researchers to care institutions, from art to peer groups. People struggling with an experience of loss, informal caregivers, people wanting to make decisions on care or engage in advance care planning and basically anyone looking for connection or inspiration concerning care, loss and end of life are most welcome to walk in on Thursday from 2.00 -7:30pm and on Friday from 2.00 to 5.00pm.

The information distributed at this fair is partly in Dutch, partly in English.  
Programme: <https://www.brugge.be/knooppuntenbeurs> (Dutch only)

## Palliative Care & Social Practice

eISSN: 11782242 • ISSN: 11782242



journals.sagepub.com/pcr



# ABSTRACT BOOK

The PHPCI 2022 conference's Abstract Book has been published in Palliative Care & Social Practice

Palliative Care & Social Practice is an open access, international, peer-reviewed journal, partnered with Public Health Palliative Care International, and officially endorsed by the EAPC Reference Group on Public Health and Palliative Care, and by the End-of-Life Care (EOLC) Research Group – VUB and Ghent University. All articles are listed on PubMed, PubMed Central and Scopus. The journal publishes on all aspects of palliative care, with a particular emphasis on social approaches to palliative care such as public health perspectives and civic/community developments and actions – as well as publishing on clinically oriented symptom management.

Please visit the journal homepage for more information:

<https://journals.sagepub.com/home/pcr>. You can also email the Managing Editor Georgia Patey on [georgia.patey@sagepub.co.uk](mailto:georgia.patey@sagepub.co.uk) with pre-submission enquiries.

# OXFORD TEXTBOOK OF PUBLIC HEALTH PALLIATIVE CARE

Order online at [www.oup.com](http://www.oup.com) with promotion code **AMPROMD9** to save 30%!

Edited by Julian Abel and Allan Kellehear  
Oxford Textbooks in Palliative Medicine

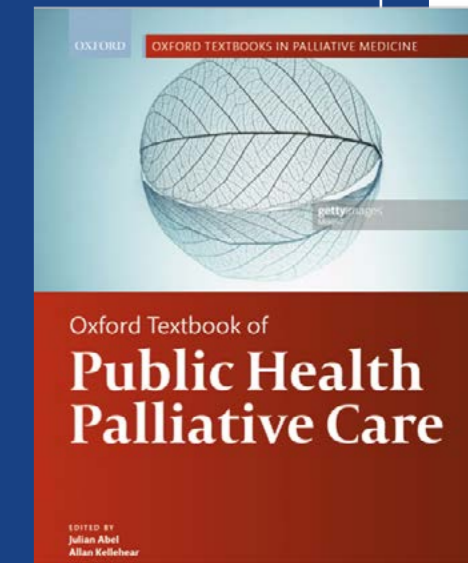
- The first comprehensive and authoritative textbook on the growing specialty of public health palliative care
- Written by international leaders in the field
- Explores the role of 'new' public health, or health promotion, as the basis for the development of public health palliative care
- Looks beyond the traditional symptom-focused view of palliative care to emphasize the crucial roles of culture and community in death, dying, loss and caregiving
- Comprehensive in scope, covering the need for a public health approach to palliative care, basic theory and concepts, practice methods, population-based approaches, and research and education
- Worldwide relevance and application to the practice of palliative care, irrespective of setting

Dr Julian Abel became a consultant in palliative care in 2001. He was the chair of the organizing committee for the 4th International Public Health and Palliative Care Conference in 2015 and was Vice President of Public Health Palliative Care International.

Dr Allan Kellehear is Clinical Professor in the College of Nursing and Health Sciences at the University of Vermont, USA.



April 2022  
Hardback  
9780198862994  
336 pages  
£95.00  
£66.50



<https://bit.ly/3QL250e>



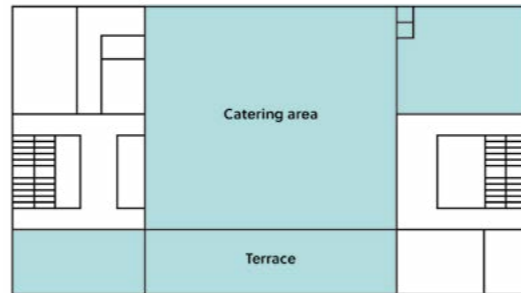
# EXHIBITION

## LOCATION IN CONGRESS VENUE: LEVEL 4 - CATERING AREA

### LIST OF STANDS:

- 1 Marie Curie
- 2 Glasgow End of Life Studies Group, University of Glasgow
- 3 Atlantes Global Observatory of Palliative Care
- 4 Oxford Textbook of Public Health Palliative Care
- 5 Public Health Palliative Care International
- 6 Compassionate Communities Center of Expertise (COCO)
- 7 End-of-Life Care Research Group Vrije Universiteit Brussel & Ghent University
- 8 WHPCA & IAHPIC & ICPCN (Worldwide Hospice Palliative Care Alliance & International Association for Hospice and Palliative Care & International Children's Palliative Care Network)
- 9 International Observatory on End of Life Care (IOELC)
- 10 Compassionate Bruges

# 04



# GESTURES OF ARTISTIC CARE

An invitation formulated by curators **Julie Rodeyns** and **Else Gien Statema**, in close consultation and collaboration with the team behind the 7th PHPCI congress.

We have invited artists to join the PHPCI conference as conversational partners who, from their specific disposition, practice and expertise may contribute to the discussion on fostering compassionate communities and facing challenges around serious illness, caregiving, and dying and bereavement.

The participating artists are: Rasa Alksnyte, Anaïs Chabeur, Florin Flueraș, Fiona Hallinan, oracle (Michel Yang, Caroline Daish & Justine Maxelon), Hoda Siahtiri, Luca Vanello and Ellen Lili Vanderstraeten.

They will, for the duration of the conference, form a 'temporary artistic community', the aim being to take their individual artistic practices and experiences as a starting point to exchange, explore, experiment, and collaborate in order to arrive at a shared conceptualization of how art could contribute to the Compassionate Communities movement in tackling challenges around serious illness, caregiving, dying and bereavement- without losing sight of the specific thinking modalities art can invite for (visionary, systems, creative, visual, spatial, embodied,... learning/thinking). To do so, these artists will enter into a dialogue with each other, the conference, and you through their practice: proposing artistic gestures, interventions, presentations, performances, and workshops. This is organized as an organic process: things will happen and be planned as ideas mature. We, therefore, invite you to check the daily updates via the congress' info panels and social media to follow what's happening.



Photo courtesy of the artist.

## RASA ALKSNYTE

Rasa Alksnyte is a transdisciplinary artist, photographer, teacher and mentor based in Belgium. Through her background in performing arts, she has an ability to take you by surprise. Her mind is filled with rarities and working practices that extend beyond expected frameworks and boxes. She often surrounds herself with energy that inspires others to play, experiment, cook, and garden. By gently assisting she encourages and opens up other artists to face difficult questions, find solutions, and strive for a higher creative level. In her work with children, Rasa doesn't teach but tries to fill their heads with rainbows, self-made toys, and sweetness. When facilitating groups Rasa helps participants to take small steps forward and connect separate images into one beautiful picture. Rasa Alksnyte works with everything that grows and grows and grows...

## ANAÏS CHABEUR

Anaïs Chabeur is an artist based in Brussels. She graduated from La Cambre (Brussels) in 2016 and HISK (Ghent) in 2018. Anaïs crafts poetic and sensorial atmospheres, invitations to inhabit time consciously. Through films, objects and texts, her practice seizes liminal situations touching upon finitude. The visitors are often invited to interact with the pieces allowing for emotional, historical, or vibratory charges to be shared in the confidential setting of her exhibitions. The intimacies of dying are an underlying topic in her work and life. She poetically approaches gestures of care and their necessity, weaving personal fictions with the universality of death.

Photo courtesy of the artist.







## FLORIN FLUERAS

Florin Flueras' work expands into spheres of politics, philosophy, spirituality, health care, media, education, and literature – producing performative meetings between art and its outside, affecting conventions and certainties in both areas. More than visual or conceptual, he sees his recent practice as affect art. During the PHPCI conference, he will activate *Collapse Yoga* (2016) in different spaces and situations. Collapse Yoga mixes Yoga with possible 'negative' states such as sadness, illness, anxiety, hopelessness, worry, renouncement, exhaustion, grief, boredom, decrepitude, failure, and their traces in the body. It collides Yoga's aims for coordination, balance, strength, and flexibility with the body's deep desires for asymmetry, incoordination, weakness, relaxation, freedom, unbalance, abandonment, and collapse. It affects the normativity of the human form. *Collapse Yoga* can tune our bodies with natural, cultural, and personal collapsing environments, affecting maybe some of them. The relation with our bodies tends to extend to the entire reality – there is a correspondence and influence between the body's politics and society's problems.

## FIONA HALLINAN

Fiona Hallinan is an artist and researcher, graduated with BA and MSc from Trinity College Dublin, currently undertaking a practice based doctoral project at LUCA School of Arts KU Leuven. Hallinan's doctoral project explores the coming-into-being of the concept of *Ultimology*, which proposes the study of endings as an urgent concern. In this project, which began through a collaborative residency as the Department of Ultimology at the CONNECT Centre for Future Networks at Trinity College Dublin, specific endings are established as case studies; the demolition of a Catholic church in Dublin, Ireland or the extinction of a specific plant in the Pajottenland, Belgium. Death is an unavoidable phenomenon we can, at least, describe as a significant ending. Could its associated traditions, practices and understandings, honed over generations of co-existence, offer insights into how we might manage to look directly at endings? A reading group set up by Hallinan to explore these questions has led to establishing an embroidery circle where participants, while working with their hands, are invited to share personal experiences and knowledge of death and dying. For the PHPCI conference this participatory workshop will be available for attendees to join. Participants sew together, mapping an elusive understanding of death and dying onto a tablecloth. We create a caring space for slow, inconsistent and sometimes difficult conversation. This object, with collective knowledge sewn into it, will go on to inform a set of tools, practices and devices to give life to *Ultimology*, accommodating meals and conversations that delve into other endings.





## ORACLE (MICHEL YANG, CAROLINE DAISH & JUSTINE MAXELON)

Justine Maxelon is a Brussels-based dancer and performer. She is a practitioner of things; mainly working collectively around notions of listening, care and voice in relation to body and surroundings. At the moment she is exploring healing understood as ongoing care, the possible relations between art and an elderly home in Brussels, gardening and communal practices of sharing both in the art context and beyond. In all her engagements, thinking and doing that focuses on the reflection and implementation of Fairer Arts Practices is important for her.

Caroline Daish works independently performing for other artists and collaboratively in community arts projects. She has co-founded several arts organisations and practices both in Australia and Europe since graduating in the 80s from Adelaide Uni Theatre Studies. Improvisation has always been the centre of her research as a performance mode, tool for devising or a way to communicate and facilitate at the nexus of voice, physical theatre, lm & sound.

Michel Yang is an American born, Brussels-based performance artist. Michel's primary medium is the body, however, video and photography have entered her work as extensions of her body practice. Her creations have involved rewriting scars, brick-laying her body, fashioning heels out of candle holders, teaching French while speaking fake Chinese...

Together, Michel, Caroline and Justine formed a 'connective', developing a body-voice improvisation practice: oracle. How to care for oracle as a practice and how to let oneself and the community be cared for by a practice? How to give agency to a practice and let oneself be guided by it? These are only some of the questions, they will bring to the conference...



## HODA SIAHTARI

Hoda Siahtiri is a multidisciplinary artist and researcher based in Brussels. Since 2020 she is affiliated as an artistic PhD. researcher with University of Antwerp and the University-college of Sint Lucas Antwerp to advance her research *Singing The Silences*. Her research revisits and mediates the historical Bakhtiari women singing practice of grief. Hoda's artistic focus is on collective and individual artistic practices of grief. She explores lamenting and bodily sonic resonance as a journey of revisiting, reconstructing, and narrating by entering the body scapes of pain and sufferance one has been through as an individual and in generations. She works with these experiences in her artworks as the fuel of commonality to build up connections of care and deep healing.

## LUCA VANELLO

Luca Vanello is an Italian-Slovene visual artist who lives and works in Brussels. He recently started a PhD. at FASoS (Maastricht University Faculty of Arts and Social Sciences). Vanello creates hybrid sculptures in which organic material, stripped of its color by a chemical process fuses with other forms, such as plastic components from exteroceptive sensors used in humanoid robotics, or the energy consumption of a server of a memorial website. Configured as an ecosystem exploded into its constituent materials, his work wishes to escape an anthropocentric viewpoint and restore, as fragments, the evidence of a microscopic look at vulnerability and the precariousness of existence, exploring the entanglements between the cycles of our existence and the cycles of the materials that surround us and compose us. Approaching matter as a vibrant agent, his practice invites us to think with and through matter in order to explore notions such as shared vulnerability, transience, and intimacy- and develop a broader notion of care and new forms of togetherness.



Photo courtesy of the artist.

## ELLEN LILI VANDERSTRAETEN

*Finding sheltering shell-selves  
on harmless whistled  
scareless scarless fingertips  
Half-armed leaning defines  
the broken chair chains  
of goodness interferes*

*Bending the stuffed toy necks  
next to the one-eyed winding ups  
is there in blinking eyes*

*The newborn's glaze  
the breastfeeding of mankind's  
mammals with enigmatic weeds  
of wisdom's*

**Care**

Henny Baeken

Performer, creator, and curator Ellen Lili Vanderstraeten is fascinated by co-creative ways of making art and the multiformity of textiles. Her work departs from daily routines of care such as walking, sleeping, cooking, reading ... which she experimentally loosens from their monotonous patterns to create new sensory experiences. For the congress, Lili will share a new body of work called *Huskrooms*: a growing archive of duvets that carry carefully composed found objects and cloth. She gathers the materials during long walks with friends, family, and collaborators: going to thrift shops or collecting old sheets left behind in dusty closets and boxes in the attic. Next, the materials are put together during a focused research on colors and textures, in a search for poetics and meanings that arise through the friction of bringing together abandoned materials that usually are not brought into the same space. All of this is part of an important practice of spending time together and opening up space for verbal and non-verbal play and conversation around the topic of care, that the artist proposes during these instances. Gestures and thoughts that come up during this joint process are intuitively included in the making of these duvets. The duvets are put together in a time-consuming process of cutting and sewing the artwork. Lili will share this process with you - and invite you into a space to jointly think about the specific conditions that people need in order to focus on inner self-perception.

## FLORILEGIUM

A local, informal network of Bruges creatives and artists who already have a practice in developing multi-media interventions for important moments in life (such as farewells) will, as a collective, create interventions for some ceremonial moments, such as the festive conference opening in the City Hall or the conference dinner. They will give a creative translation of the themes and content of the congress.

With: Hilke Boudens (florist, stylist), Mark Lambrecht (cellist), Maud Bekaert (visual artist), Amaryllis Dieltiens (soprano), Bart Naessens (organist, conductor, principal Stedelijk Muziekconservatorium) en Hannelore Devaere (harpist, musicologist).

# NOTES

---

---

---

---

---

---

---

---

---

---

---

---

---

---

---

---

---

---

---

---

---

---

---

---

---

---

---

---

---

---

---

---

---

---

---

---

---

---

---

---

---

---

---

---

---





With financial support from



## Bronze Sponsors



Glasgow End of Life Studies Group



University of Glasgow

## Scholarships by IAHPIC



## Contact End-of-Life Care Research Group

[endlifecare@vub.be](mailto:endlifecare@vub.be)

website conference: [www.PHPCI2022.com](http://www.PHPCI2022.com)

website End-of-Life Care Research Group: [www.endlifecare.be](http://www.endlifecare.be)

